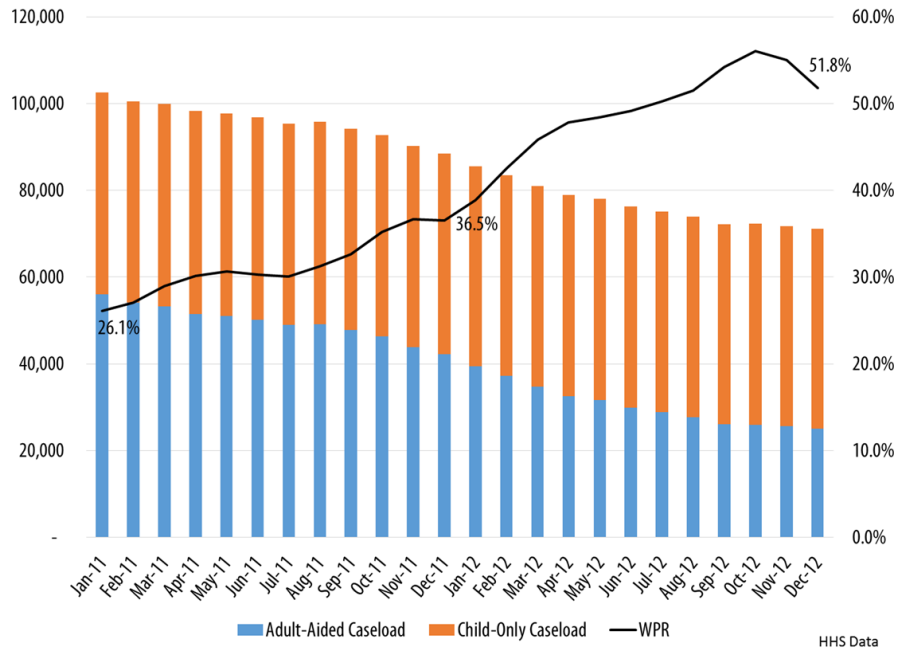


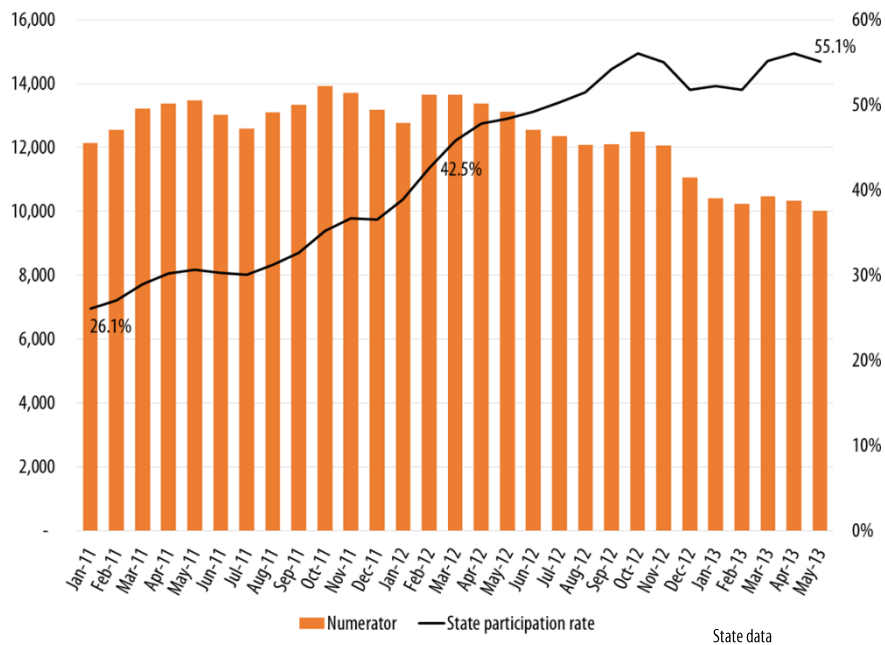
# Ohio increased its TANF work participation rate by serving fewer families not by engaging more families in work\*

Liz Schott, Center on Budget and Policy Priorities

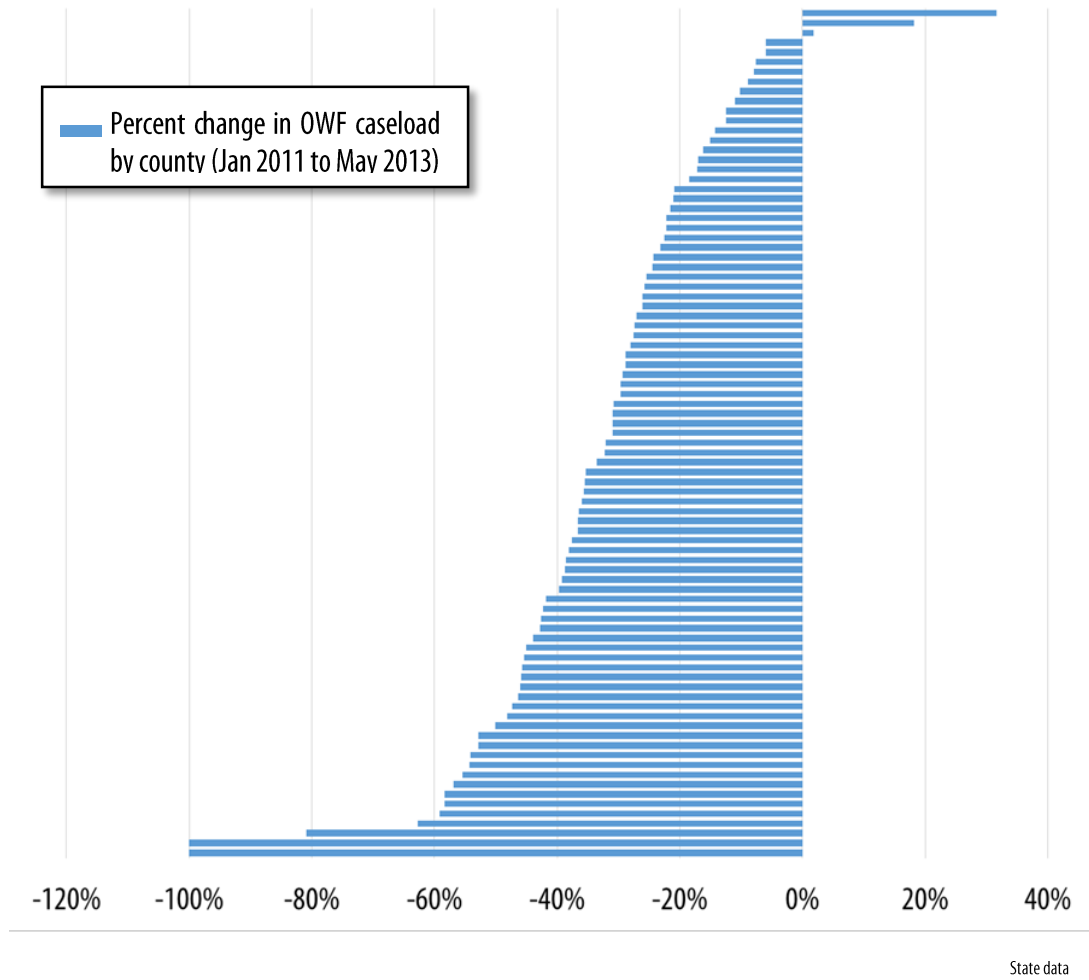
OWF caseload compared to the work participation rate: broken out by adult-aided and child-only cases



The number of OWF recipients counted in the work participation rate compared to WPR



### Extent of caseload change varied widely across Ohio counties



\*CBPP analysis of Ohio state and county data.